

Welcome to this newsletter about our proposals to develop North Logiealmond Wind Farm

Muirhall Energy Ltd is a Scottish renewable energy developer. We develop and operate renewable energy projects across Scotland, and have provided over £4.6 million in community funding to date.

North Logiealmond Wind Farm is located approximately 18km north-west of Perth, on land owned by Scone Estates. We have been working with key stakeholders and the local community since Autumn 2024 to develop these proposals.

We hope that this newsletter provides insight into how our plans have changed, the opportunities that they will create and the events we are holding for you to view and discuss the project.

If you have any questions, please contact the team at NorthLogiealmondWF@muirhallenergy.co.uk for further information.



UPCOMING EVENTS

We invite you to attend one of our three events to learn about how our plans have changed.

Bankfoot Church Centre
Tulliebelton Rd, Bankfoot, PH1 4BS

Thursday 22nd January
3pm - 7pm

Chapelhill Hall
Logiealmond, PH1 3TH

Wednesday 28th January
3pm - 7pm

Birnam Arts & Cafe
Station Rd, Birnam PH8 0DS

Tuesday 3rd February
3pm - 7pm

By attending these events, you will be able to:

- Speak to the project team
- Learn how the plans have changed
- Have your questions answered
- Provide your comments

Visualisations and new interactive mapping tools will be available at the events, alongside additional information on key issues such as noise, construction impacts, proposed infrastructure and environmental enhancements.

You will also be able to view the materials online at: www.muirhallenergy.co.uk/projects/48-north-logiealmond

In this edition:

UPCOMING
EVENTS

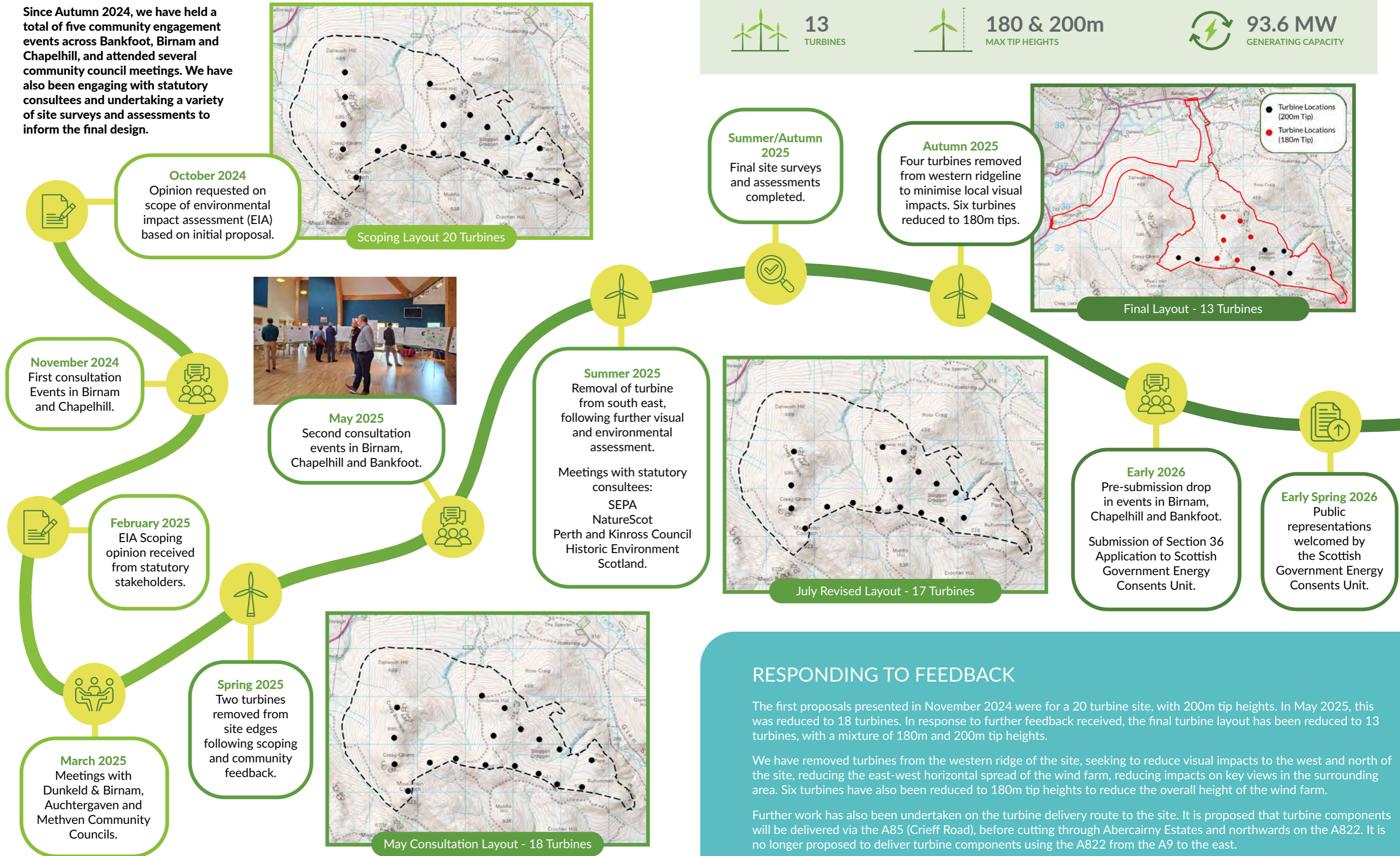
DEVELOPMENT
JOURNEY

SUPPORTING
COMMUNITIES

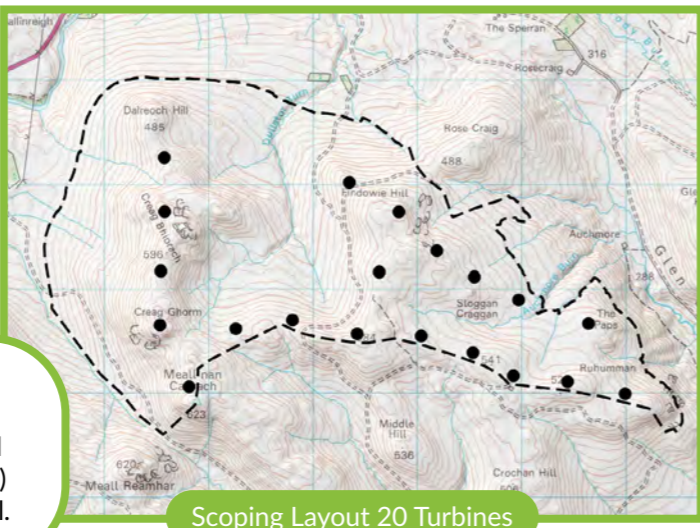
COMMUNITY
BENEFIT FUND

NORTH LOGIEALMOND: DEVELOPMENT JOURNEY

Since Autumn 2024, we have held a total of five community engagement events across Bankfoot, Birnam and Chapelhill, and attended several community council meetings. We have also been engaging with statutory consultees and undertaking a variety of site surveys and assessments to inform the final design.



October 2024
Opinion requested on scope of environmental impact assessment (EIA) based on initial proposal.



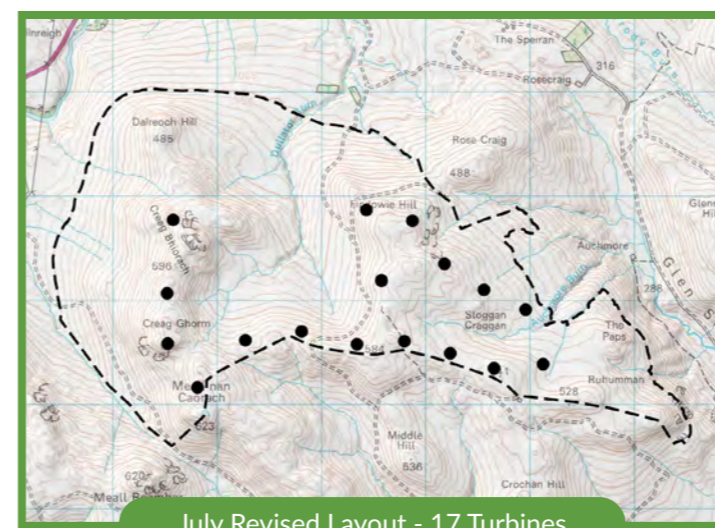
November 2024
First consultation Events in Birnam and Chapelhill.



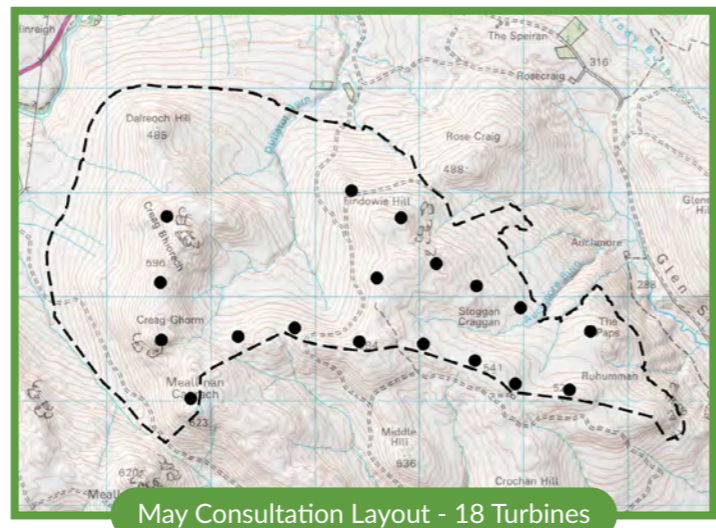
May 2025
Second consultation events in Birnam, Chapelhill and Bankfoot.

February 2025
EIA Scoping opinion received from statutory stakeholders.

Summer 2025
Removal of turbine from south east, following further visual and environmental assessment.
Meetings with statutory consultees:
SEPA
NatureScot
Perth and Kinross Council
Historic Environment Scotland.



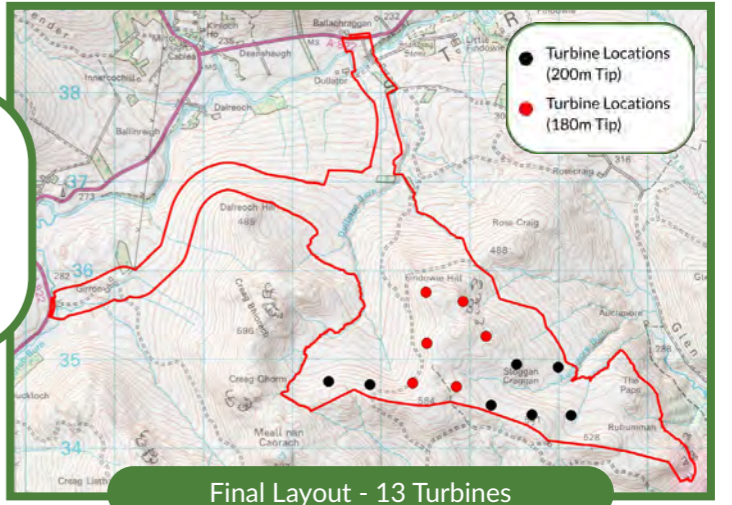
Spring 2025
Two turbines removed from site edges following scoping and community feedback.



March 2025
Meetings with Dunkeld & Birnam, Auchtergaven and Methven Community Councils.

Summer/Autumn 2025
Final site surveys and assessments completed.

Autumn 2025
Four turbines removed from western ridgeline to minimise local visual impacts. Six turbines reduced to 180m tips.



Early 2026
Pre-submission drop in events in Birnam, Chapelhill and Bankfoot.
Submission of Section 36 Application to Scottish Government Energy Consents Unit.

Early Spring 2026
Public representations welcomed by the Scottish Government Energy Consents Unit.

The layout has now been reduced to 13 turbines, with a mixture of 180m and 200m tip heights proposed. The changes seek to reduce visual impacts to the west and north of the site and reduce the overall height of the wind farm.



13
TURBINES



180 & 200m
MAX TIP HEIGHTS



93.6 MW
GENERATING CAPACITY

RESPONDING TO FEEDBACK

The first proposals presented in November 2024 were for a 20 turbine site, with 200m tip heights. In May 2025, this was reduced to 18 turbines. In response to further feedback received, the final turbine layout has been reduced to 13 turbines, with a mixture of 180m and 200m tip heights.

We have removed turbines from the western ridge of the site, seeking to reduce visual impacts to the west and north of the site, reducing the east-west horizontal spread of the wind farm, reducing impacts on key views in the surrounding area. Six turbines have also been reduced to 180m tip heights to reduce the overall height of the wind farm.

Further work has also been undertaken on the turbine delivery route to the site. It is proposed that turbine components will be delivered via the A85 (Crieff Road), before cutting through Abercairny Estates and northwards on the A822. It is no longer proposed to deliver turbine components using the A822 from the A9 to the east.

MUIRHALL ENERGY SUPPORTING COMMUNITIES

COMMUNITY BENEFIT FUND

If consented, North Logiealmond Wind Farm could provide the following community benefit package:



Construction phase funding of **£65,000** based on 13 turbines



An operational community benefit fund of **£7,000** per MW, equating to **£650,000** per year throughout the project's operational lifespan.



There will also be an opportunity for up to **10%** Community shared ownership of the operational wind farm.



LOCAL GRANTS AWARDED

We recently partnered with Perth-based renewable energy installer Broden Ltd to help Fairview School restore an off-grid solar panel and battery storage system. Muirhall Energy awarded £3,200 for the materials while Broden donated the labour and the first year of maintenance.

A number of other small grants have been made through our Quarterly Funding Panel:

- **£2,778** to Methven & District Community Council for defibrillator and equipment;
- **£10,000** towards the refurbishment and extension of Amulree Village Hall; and
- **£2,510** to Dunkeld & Birnam Events Group for its annual Santa Day.

If you are involved in a community project which is looking for a small grant, you can apply on our website here:



www.muirhallenergy.co.uk/what-we-do/community-funding/enquiry

LOCAL SUPPLY CHAIN

As an independent Scottish developer, Muirhall Energy is committed to maximising local content within all of our projects.



We need companies of all sizes and backgrounds to support the development, delivery and operation of our projects.

Register to be a part of our supply chain online at www.muirhallenergy.co.uk/what-we-do/supply-chain

INSPIRING FUTURE CAREERS



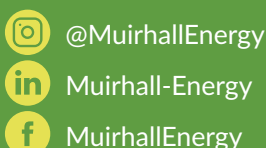
We are excited to share that we have partnered with Earth Energy Education to deliver workshops for local primary and secondary schools over the coming months. Members of our team will support Earth Energy Education, providing tailored sessions focused on renewable energy.

The Team also supported Bertha Park High School and Perth Academy Careers Days to discuss the expansive job opportunities in the industry.

We also attended the Glenalmond College 'Real World Learning' day and spoke to senior pupils about career opportunities.



CONNECT WITH US...



@MuirhallEnergy

Muirhall-Energy

MuirhallEnergy



muirhallenergy.co.uk



NorthLogiealmondWF@muirhallenergy.co.uk



01501 785088