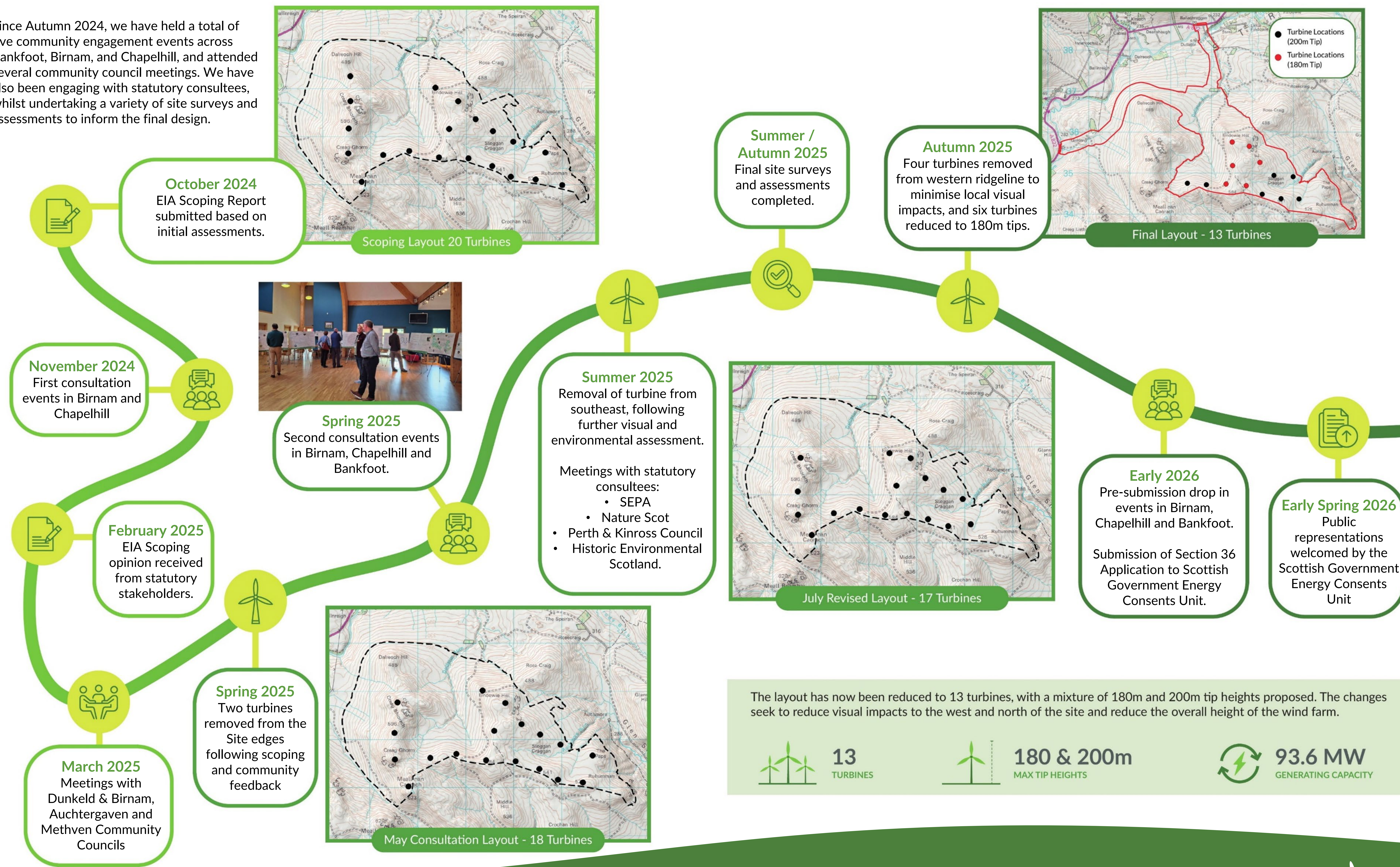



North Logiealmond: Development Timeline

Since Autumn 2024, we have held a total of five community engagement events across Bankfoot, Birnam, and Chapelhill, and attended several community council meetings. We have also been engaging with statutory consultees, whilst undertaking a variety of site surveys and assessments to inform the final design.



The layout has now been reduced to 13 turbines, with a mixture of 180m and 200m tip heights proposed. The changes seek to reduce visual impacts to the west and north of the site and reduce the overall height of the wind farm.


13 TURBINES
 
180 & 200m MAX TIP HEIGHTS
 
93.6 MW GENERATING CAPACITY