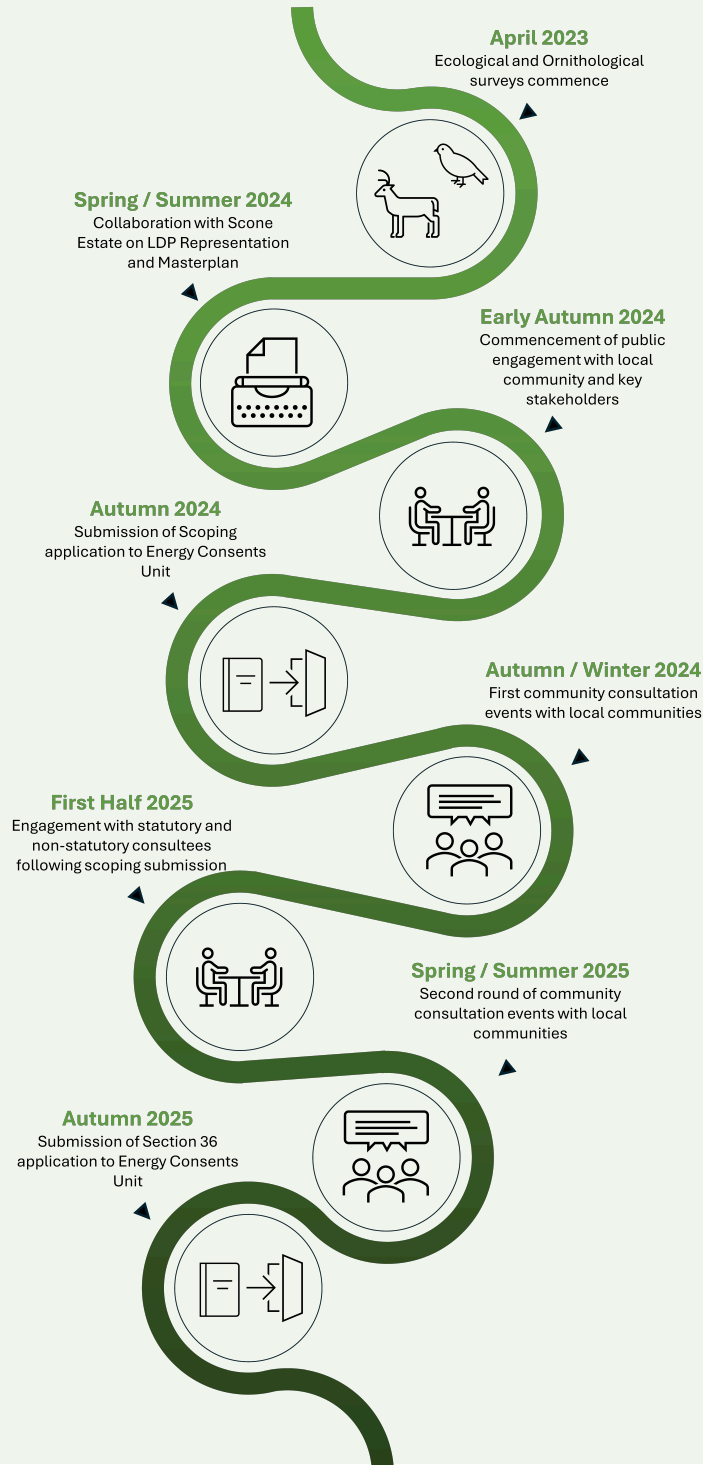


Project Timeline



Communities and Consultation

As part of our people-first approach, Muirhall Energy and Scone Estates are committed to the principles of community wealth building and a just transition to a net-zero economy. Investment in communities is at the heart of every Muirhall Energy project. A key element of our success is "The Muirhall Way" which is focused on three core pillars:



Muirhall Energy and Scone Estates will work in partnership with local communities to develop a community funding initiative that will deliver meaningful and positive outcomes for the area. By extending the area to which community investment funds from this development will be made, more people will be included in the social and financial benefits of the wind farm. This could see up to £50 million invested in Perthshire over the life of the project.

Before any submission is made, Muirhall Energy will be in touch with Local Councilors, Community Councils and community groups to outline the Proposed Development in more detail, and invite them to work with us to make it a success. Later this year, local residents and interested parties will be invited to attend community engagement events. It is expected that an application will be submitted in the Autumn of 2025. Should you have any questions or concerns regarding the Proposed Development, please email us at NorthLogiealmondWF@muirhallenergy.co.uk.

Should you wish to receive updates about the project, you can sign up to our mailing list using the QR code below:



More information is available on our website:
muirhallenergy.co.uk



North Logiealmond Wind Farm

Information Leaflet

Scoping Submission - Autumn 2024



Project Information

Muirhall Energy and Scone Estates are working in partnership to develop a wind farm at North Logiealmond.

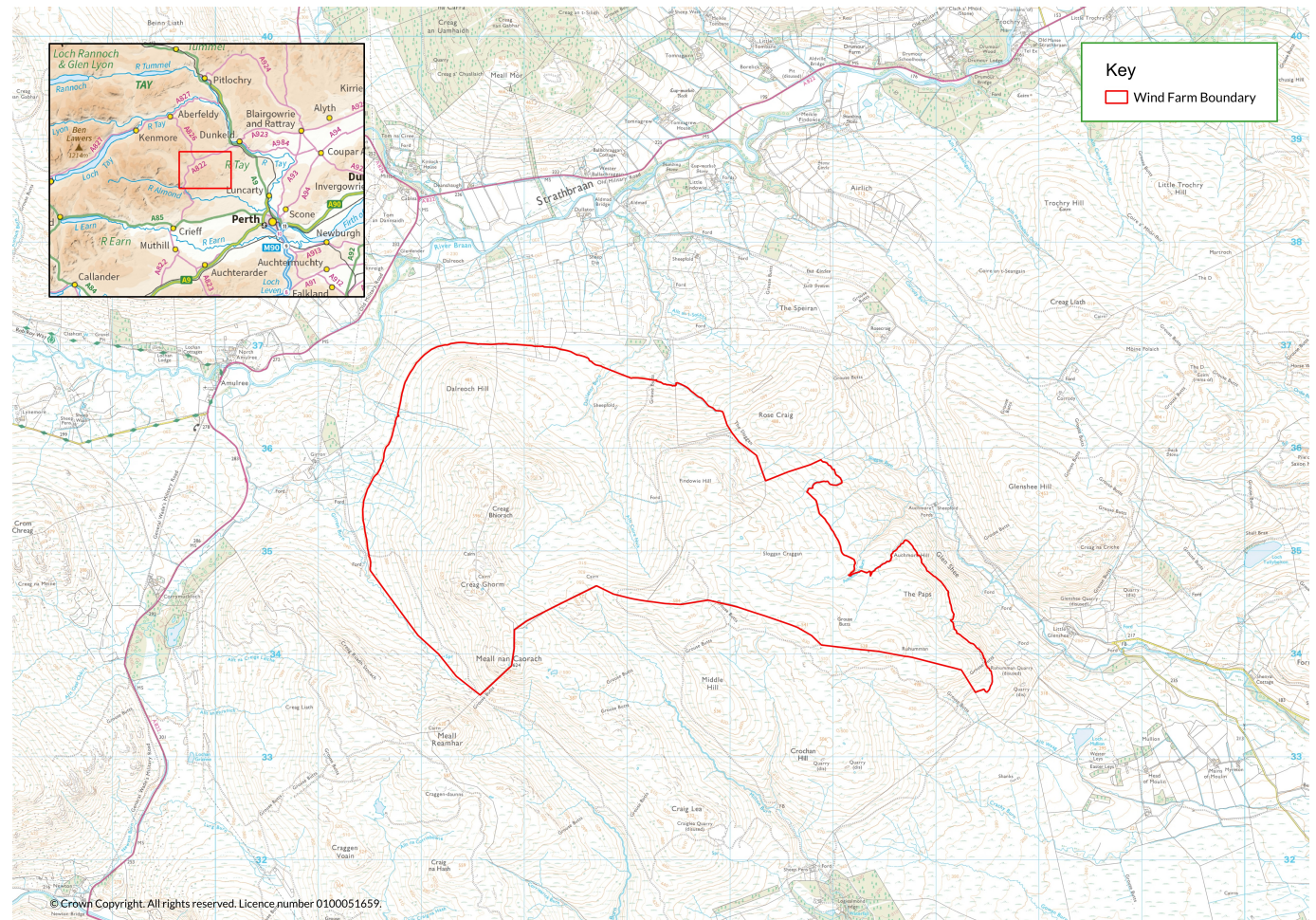
Founded in 2009, Muirhall Energy is a leading Scottish renewable energy developer, with projects at varying stages of the planning process across the UK. Scone Estates is undertaking a holistic approach to land management, with a clear focus on taking action and addressing the climate emergency and nature crisis.

North Logiealmond lies approximately 18km north-west of Perth. The site is in an upland location with elevations over 400m above sea level with rolling terrain and upland watercourses, typical of the environment. The proposed development will comprise the following elements:

- Up to 20 wind turbines with a total installed grid capacity of up to 140MW;
- Site access and access tracks;
- Underground cabling;
- On site substation and control building;
- Temporary construction compounds;
- Battery storage; and
- Other ancillary infrastructure.

As part of this opportunity, the potential to provide clean, green power by private wire to Perth and surrounding areas is being investigated. This could contribute directly to Perth and Kinross Council's decarbonisation strategy, creating an attractive prospect for future business investment and regional development, enabling the regeneration of Perth, powered by renewable energy.

Muirhall Energy and Scone Estates are committed to implementing a robust biodiversity enhancement plan as part of the development of North Logiealmond Wind Farm. The project is at an early stage, currently targeting an Environmental Impact Assessment scoping submission later this year.



As part of North Logiealmond Wind Farm, Muirhall Energy will offer host communities industry leading investment through our Community Investment Fund (C.I.F), along with the opportunity for shared ownership in the project.

Muirhall Energy will work closely with our host communities to ensure the effective implementation of any community investment package. These core offerings support communities close to Muirhall Energy projects, helping them create a lasting legacy by supporting issues which matter to them; decisions made *by our communities, in our communities, for our communities.*

Scone Estates is pioneering an integrated land management strategy that encompasses agriculture, forestry, renewables, biodiversity and sustainability initiatives.

Scone Estates recognises that responsible stewardship can have a profound and positive impact on the people of Perthshire, while contributing to combat the global climate emergency and biodiversity crisis. The proposed wind farm is the next stage of this strategy at North Logiealmond after Scone Estates recent reforestation project, in which over half a million trees were planted.